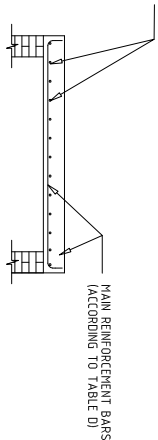


### CAST INSTITU COVER SLAB FOR CIRCULAR SHAFT SECTION

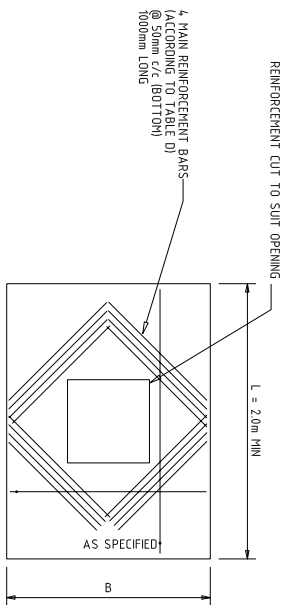
DISTRIBUTION REINFORCEMENT  
(ACCORDING TO TABLE D)

SECTION A-A  
(NOT INDICATING REINFORCEMENT AROUND HOLE)

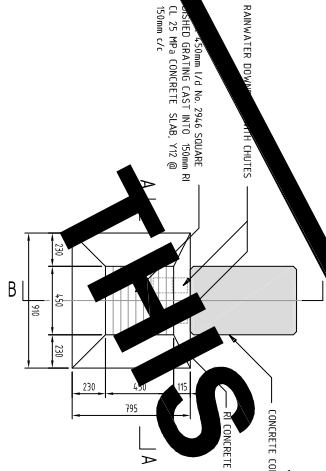
TABLE C: USE OF MANHOLES AT JUNCTION BOXES

APPLICATION	TYPE OF COVER AND FRAME
At junction boxes falling underneath the carriage way.	SAB5 Type 4 Cast iron Heavy duty
At least every 100m on long inaccessible stormwater lines.	SAB5 Type 4 Precast concrete Medium duty
At junction boxes falling underneath block or concrete paving on the sidewalk.	SAB5 Type 4 Precast concrete Medium duty
At junction boxes where the main stormwater pipes are buried on the sidewalk in roadway.	SAB5 Type 4 Precast concrete Medium & Heavy duty
At junction boxes indicated otherwise on the drawings or specified by the Engineer.	SAB5 Type 4 As specified

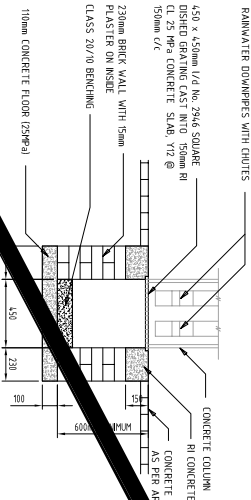
CAST INSITU COVER SLAB FOR SQUARE  
SHAFT SECTION



## PLAN ON RAINWATER CATCHPIT WITH GRID



## SECTION A - A



## SECTION B - B

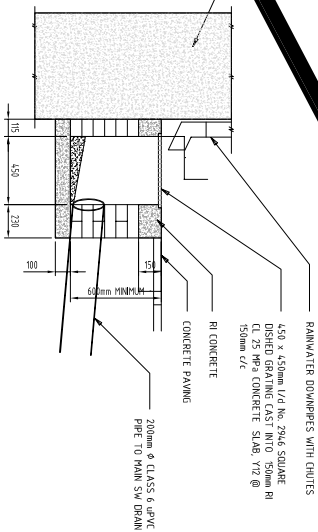
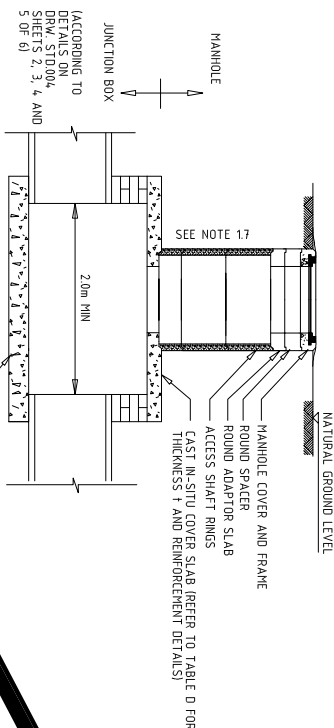
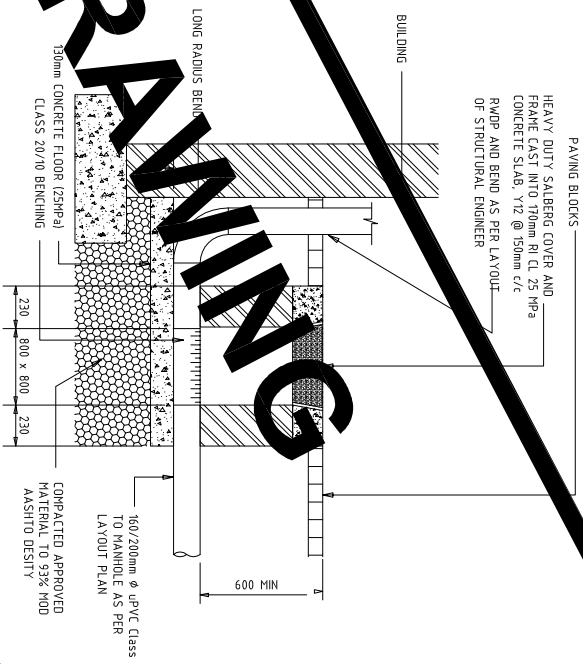
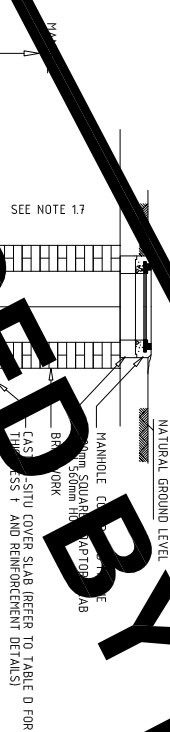


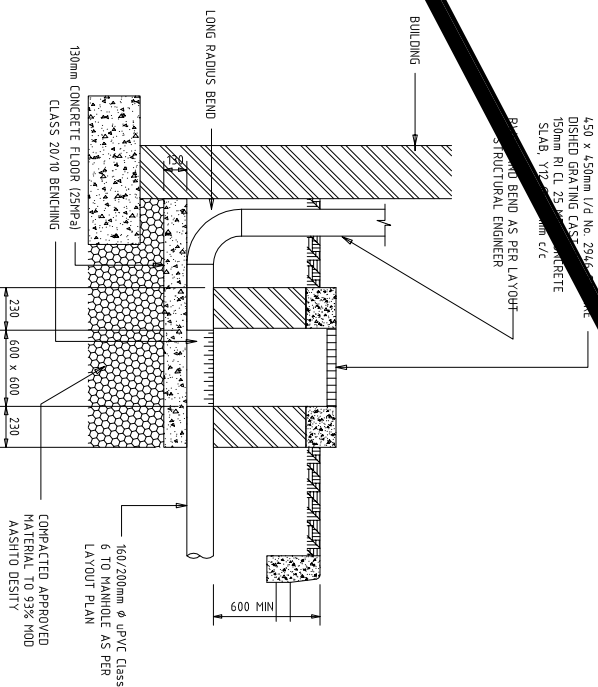
TABLE D REINFORCEMENT DETAILS FOR CAST IN-SITU COVER SLABS (Note: B < L)		
Span (B) (mm)	Thickness (t) (mm)	Main Reinforcement
Up to 1500	115	Y12 - Y120
Up to 2500	200	Y16 - Y120
Up to 3000	225	Y16 - Y100
> 3000		Design to be submitted
Distribution reinforcement: Y12 bars @ 200 c/c		
Refer to notes for bending details.		



# MANHOLE WITH PRECAST SHAFT

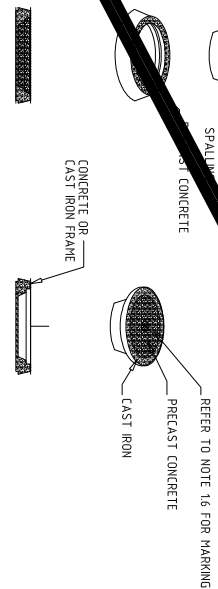


## MANHOLE FOR DOWNPIPES - IN ROAD AREA



MANHOLE FOR DOWNPIPES UP TO 250mm DIA  
IN SIDEWALKS & GARDEN AREAS

PRECAST CONCRETE FRAME AND COVER (SALBERG TYPE)	COMBINATION PRECAST CONCRETE / CAST IRON FRAME AND COVER (SEE NOTE 1.5)
1	1
2	2
3	3
4	4
5	5
6	6
7	7
8	8
9	9
10	10
11	11
12	12
13	13
14	14
15	15
16	16
17	17
18	18
19	19
20	20
21	21
22	22
23	23
24	24
25	25
26	26
27	27
28	28
29	29
30	30
31	31
32	32
33	33
34	34
35	35
36	36
37	37
38	38
39	39
40	40
41	41
42	42
43	43
44	44
45	45
46	46
47	47
48	48
49	49
50	50
51	51
52	52
53	53
54	54
55	55
56	56
57	57
58	58
59	59
60	60
61	61
62	62
63	63
64	64
65	65
66	66
67	67
68	68
69	69
70	70
71	71
72	72
73	73
74	74
75	75
76	76
77	77
78	78
79	79
80	80
81	81
82	82
83	83
84	84
85	85
86	86
87	87
88	88
89	89
90	90
91	91
92	92
93	93
94	94
95	95
96	96
97	97
98	98
99	99
100	100



**FOR CONSTRUCTION**

[illegible]

DESIGN 00, APPROVED	04/06/2009	F d L	F d LANGE	04/06/2009
------------------------	------------	-------	-----------	------------

SSB, WTP, LAB, ADMIN ISLAND AND SUBSTATIONS

DO AUTH	FDL	 1-800-451-3529 Fax: (712) 381-3525	(FOR DISTRIBUTION PIPES)
------------	-----	--	--------------------------

14031 - C - 201

SCALE	1:20	 Eskom
-------	------	---

13	14	15	16
----	----	----	----

SIZE  
FOOT/IN